

VDL art. code	Nominal size [mm]	Recommended mounting distance for use with a PVC-U PN 10 / 16 tube at 20°C			Recommended mounting distance for use with a PVC-U PN 10 / 16 tube at 30°C			Recommended mounting distance for use with a PVC-U PN 10 / 16 tube at 40°C			Recommended mounting distance for use with a PVC-U PN 10 / 16 tube at 50°C			Recommended mounting distance for use with a PVC-U PN 10 / 16 tube at 60°C		
		Assembly situation			Assembly situation			Assembly situation			Assembly situation			Assembly situation		
		A/B/C/D	E	F	A/B/C/D	E	F	A/B/C/D	E	F	A/B/C/D	E	F	A/B/C/D	E	F
		[mm]	[mm]	[mm]	[mm]	[mm]	[mm]	[mm]	[mm]	[mm]	[mm]	[mm]	[mm]	[mm]	[mm]	[mm]
5.25.010	10	300	300	300	255	255	255	210	210	210	180	180	180	150	150	150
5.25.012	12	300	300	300	255	255	255	210	210	210	180	180	180	150	150	150
5.25.016	16	400	400	400	340	340	340	280	280	280	240	240	240	200	200	200
5.25.020	20	400	400	400	340	340	340	280	280	280	240	240	240	200	200	200
5.25.025	25	400	400	400	340	340	340	280	280	280	240	240	240	200	200	200
5.25.032	32	400	400	400	340	340	340	280	280	280	240	240	240	200	200	200
5.25.033	32	500	500	500	425	425	425	350	350	350	300	300	300	250	250	250
5.25.040	40	580	580	580	493	493	493	406	406	406	348	348	348	290	290	290
5.25.050	50	640	640	640	544	544	544	448	448	448	384	384	384	320	320	320
5.25.063	63	720	720	720	612	612	612	504	504	504	432	432	432	360	360	360
5.25.075	75	800	800	800	680	680	680	560	560	560	480	480	480	400	400	400
5.25.090	90	880	880	880	748	748	748	616	616	616	528	528	528	440	440	440
5.25.110	110	960	900	900	816	765	765	672	630	630	576	540	540	480	450	450
5.25.125	125	1020	*	*	867	*	*	714	*	*	612	*	*	510	*	*
5.25.140	140	1080	*	*	918	*	*	756	*	*	648	*	*	540	*	*
5.25.160	160	1160	*	*	986	*	*	812	*	*	696	*	*	580	*	*

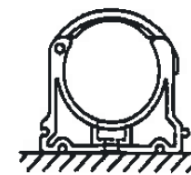
Conditions with respect to the above mentioned Advised Installation Distance:

VDL Tube Clips should be mounted on a flat and stable surface. In case of the use of C-Rails as support, the flat, closed site should be used. When a VDL Tube Clip has to be mounted on the open side of the C-Rail, a steel plate under the VDL Tube Clip has to be positioned, so it results in a flat and stable surface.

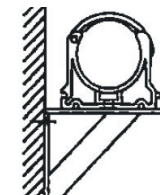
In all types of applications reliable fastening materials should be used. Only the application of bolts or screws with a flat surface on the lower end of the head in combination with a washer is allowed. Bolts and screws with a countersunk head may never be used.

The mentioned advised spacing is applicable for PVC-U pipes in the pressure rating PN 10 or PN 16, filled with water at the temperature as mentioned. The spacing is only valid in case of a static load. Dynamic loads which can occur when a pump is started or in case of opening and closing of valves are not considered and will make extra support necessary. In case of installation of heavy accessories, such as valves and filters, extra support of the pipe system should be considered.

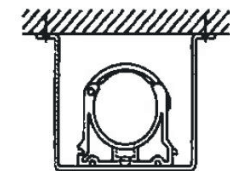
* Not recommended for mounting horizontally on the wall and ceiling. Only possible if special provisions are made (see drawings B and C).



Assembly situation A
Mounting on the floor



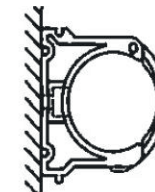
Assembly situation B
Mounting on the wall supported horizontally



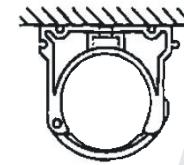
Assembly situation C
Mounting on the ceiling supported horizontally



Assembly situation D
Mounting on the wall vertically



Assembly situation E
Mounting on the wall horizontally



Assembly situation F
Mounting on the ceiling